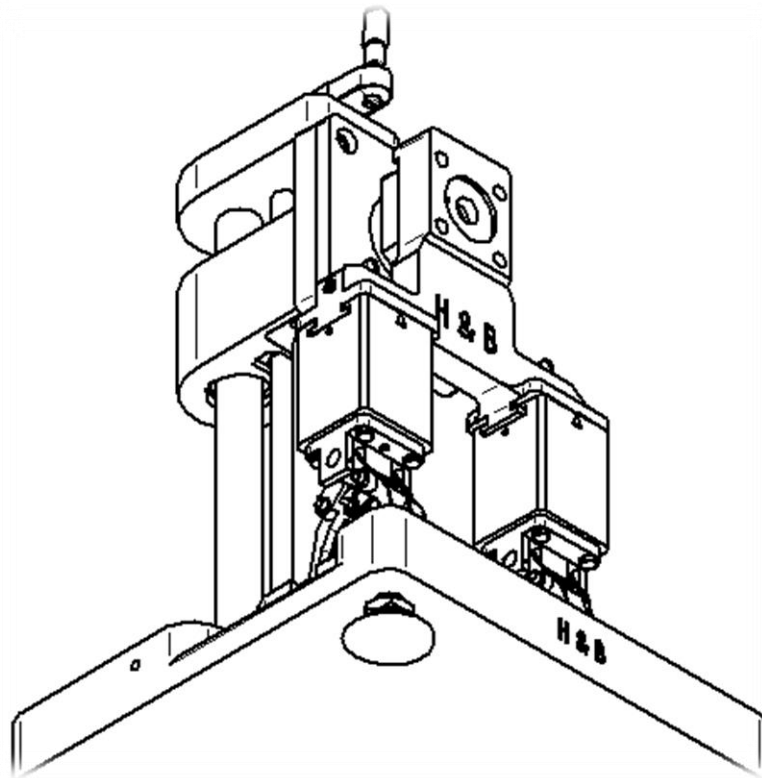


Structure

1	Short Introdution	2
2	Position list	3
3	Connecting System	4
3.1	Hartmann & Bender GmbH (Emhart Sytem)	4
4	Test Plate System	5
5	Adjustable feet	6
6	Air system	7



1 Short Introduction

Here you can see our test gauge. It was developed for the verification and adjustment of Take Out tong heads and take out tong claws.

Due to the adaptable connection you can use the gauge for the standard Emhart connection and also for the Bottero servo connection.

We have test plates in all standard sizes. The test plate consists of the ground plate and the testing dummies.

You have several possibilities to work with our development.

The first: you can use it during the changing process.

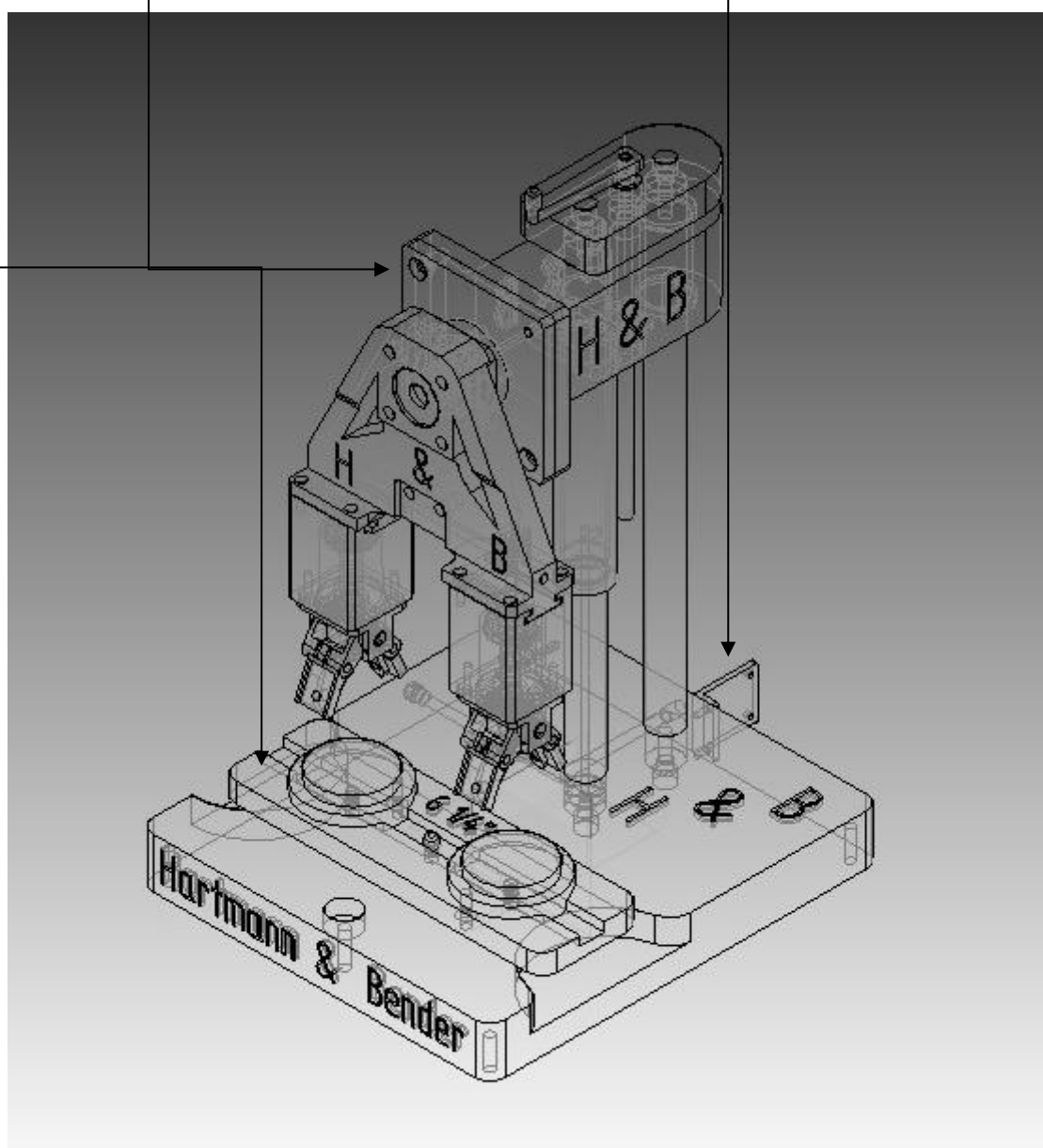
- The worker can dismantle the take out tong heads
- On person can adjust all claws during the changing process
- you have the benefit to work with more space at the blow mould site

The second: You can prepare a second series of take out tong heads for the next changing process.



2 Position list

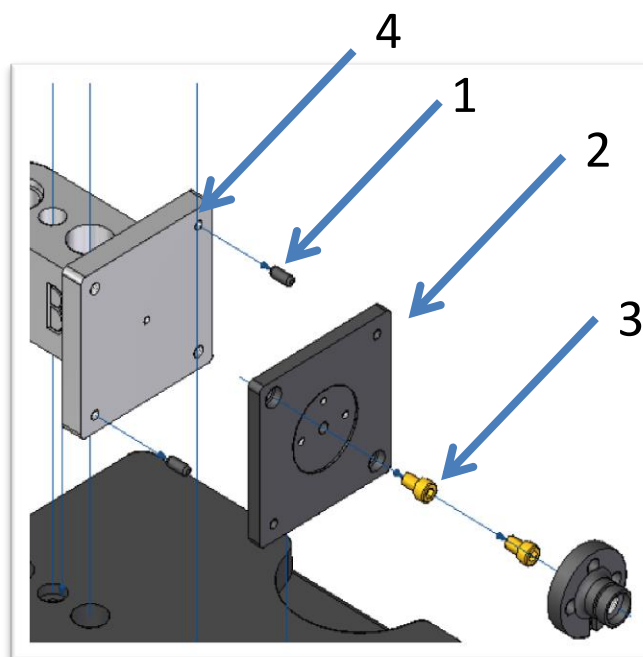
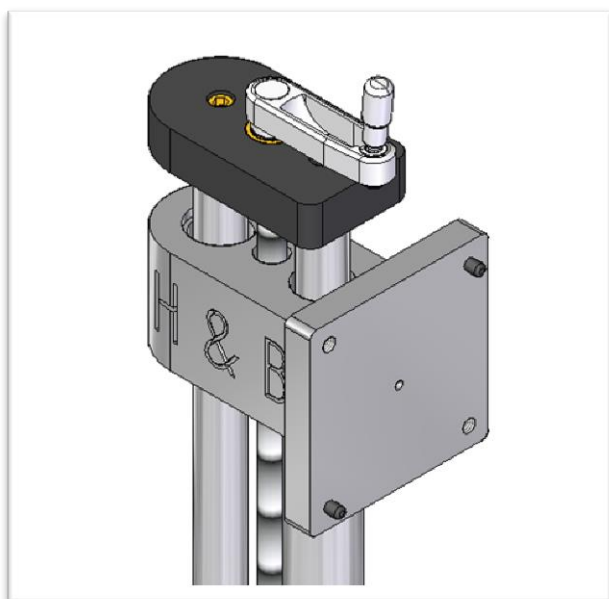
<u>Position</u>	<u>Designation</u>
1	Connecting System
2	Test Plate System
3	Air Control System



3 Connecting System

3.1 Hartmann & Bender GmbH (Emhart Sytem)

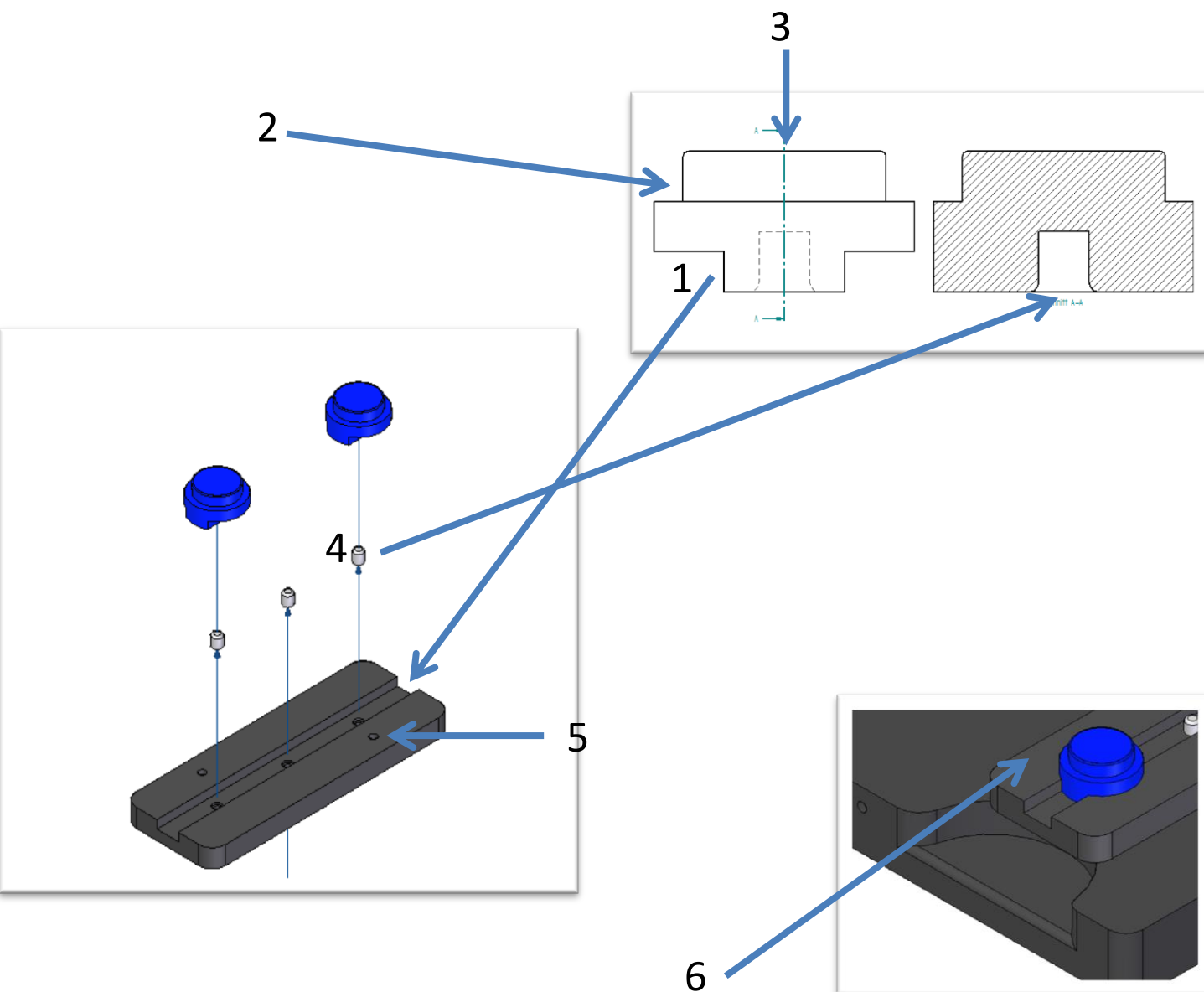
The Adapter for the Take Out Tong Head is located on the base plate (2). The base plate is screwed with two M10 hexagon socket screws on the guide carriage (4). The centering (1) pins facilitate the screwing and determine the exact position.



4 Test Plate System

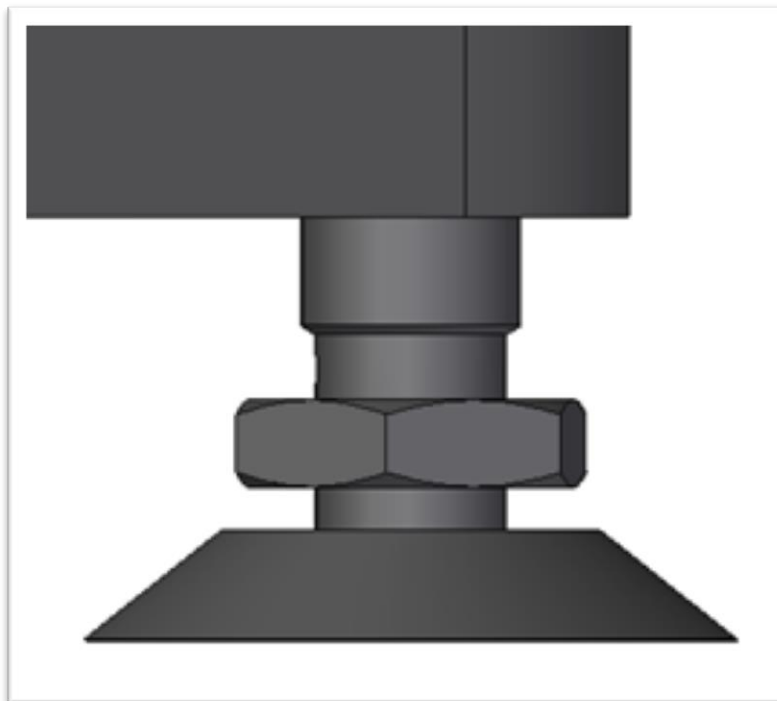
The dummies can be aligned by a form- locking groove in the test plate (1). The surface of the dummy collar (2) is responsible for the planar orientation between the take out tong claws..

Due to a half round milled (6) (left and right) in the base plate, the test system can be removed easily and replaced with another standard size.



5 Adjustable feet

Due to the individual height adjustment it is possible to work with the system on every workbench.
The circular bubble shows the current balance.



6 Air system

The overall system is vented through a 3/2 way valve (hand operated with locking function). The air guidance is within the system.

By a screwed quick coupling in the switching valve only pneumatic hose with pressure gauge must be inserted. (Usual ¼ "connector)

For safety reasons, the air connection is at the back. (Working safely)

